

DESCRIPTION AND OPERATION**RF Keypad**

Please read ALL of these instructions before proceeding.

RF Keypad - Removal and Reprogram Procedure**NOTE:**

This procedure should be used if the remote entry transmitters need to be reprogrammed to vehicle after the RF keypad has been installed to the exterior.

NOTE:

Step 2 is to be completed only if Step 1 is unsuccessful. If Step 1 is successful no further action is required.

1. Try to reprogram the RF keypad and other remote entry transmitters while the RF keypad is still attached to the exterior of the vehicle.
To program the RF keypad to your vehicle go to the appropriate "Programming and Installation" section, reference the application table below.
2. Remove the RF keypad from the vehicle exterior.
 - 1 Clean area around RF keypad.
 - 2 Slide cutting line behind RF keypad to cut tape.
 - 3 Remove the RF keypad.
 - 4 Remove adhesive from the vehicle using adhesion remover or strip off wheel.
 - 5 Remove adhesive from the back of the RF keypad.
 - 6 Scuff the back side of the keypad, with a scuff pad or wire brush.
 - 7 Clean the back of the keypad.
 - 8 Add new tape if the RF keypad is to be re-used.
 - To ensure proper keypad mounting, avoid covering the protruding portion of the keypad back.
 - Use 3M™ Acrylic Plus Tape PT1100.
3. Reprogram the RF keypad from the driver seat area.
To program the RF keypad refer to the table below for appropriate reprogramming procedure.

CONFIGURATION CHART

Model Year	Model	Communication Type	Installation Method
2014+	Fusion	2	C
2015+	F-150	2	C
2015+	Edge	2	C
2016+	Explorer	2	C

DESCRIPTION AND OPERATION (Continued)**CONFIGURATION CHART (Continued)**

2017+	Super Duty	2	C
2018+	Ecosport*	2	C
2010+	Transit Connect	1	A
2007+	Focus	1	A
2011+	Fiesta	1	A
2013+	Escape	1	A
2013+	C-Max	1	A
2014+	Transit	1	A
2013	Fusion	Not Supported	Not Supported
-	Intelligent Access Vehicles with Remote Start or Flip Key with Remote Start	Not Supported	Not Supported
2005+	All Else	1	B

NOTE:

* Requires Ford Diagnosis and Repair System (FDRS).

Configure Device**NOTE:**

Reference the table above for communication type that applies for the vehicle.

NOTE:

The keyless entry keypad can be used in various vehicle applications. The following procedure describes the method to switch between the two communication types.

1. Upon pressing the 1/2, 3/4, and 9/0 buttons simultaneously for at least one second, all five buttons will flash at a two flashes per second rate. This indicates the keypad is waiting for master code entry. The master code is entered as in a normal keypad unlock, each button press will give another five second window for the next button press. If no button is pressed within five seconds the configure mode will exit.
2. When the proper master code is entered the 9/0 button will flash a pattern that corresponds to the current protocol set:
 - One flash per second for "Communication Type 2".
 - Three flashes per second for "Communication Type 1" (Default).
3. You will have 10 seconds to:
 - Press the 9/0 button to change the protocol to "Communication Type 2".
 - Press the 1/2 button to change the protocol to "Communication Type 1" (Default).

DESCRIPTION AND OPERATION (Continued)**NOTE:**

Only one button press is recognized. After the button press is registered, the flash rate will change to reflect the new setting of the protocol. If you first press the 1/2 button, you cannot then press the 9/0 button to change the selection. You must exit the session.

4. Press the 5/6 button to confirm the entry, the 1/2, 3/4, 5/6 and 7/8 buttons will flash four times to confirm protocol change and the keypad will turn off and sleep. If the 5/6 button is not pressed within 10 seconds of protocol change, the protocol will NOT change and the procedure will need to be repeated.

Type A - Programming and Installation**NOTE:**

It is easier to program the keypad prior to attaching it to the vehicle.

NOTE:

After five seconds of idle time, the keypad will reset itself.

NOTE:

You must have all remote entry transmitters available before beginning this procedure, IKTs, Fobs and RF keypads. Check owners guide "Locks and Security" for maximum remote entry transmitters allowed, and proper key positions.

If all remote entry transmitters are not present during the programming procedure, the missing transmitters will not work following programming.

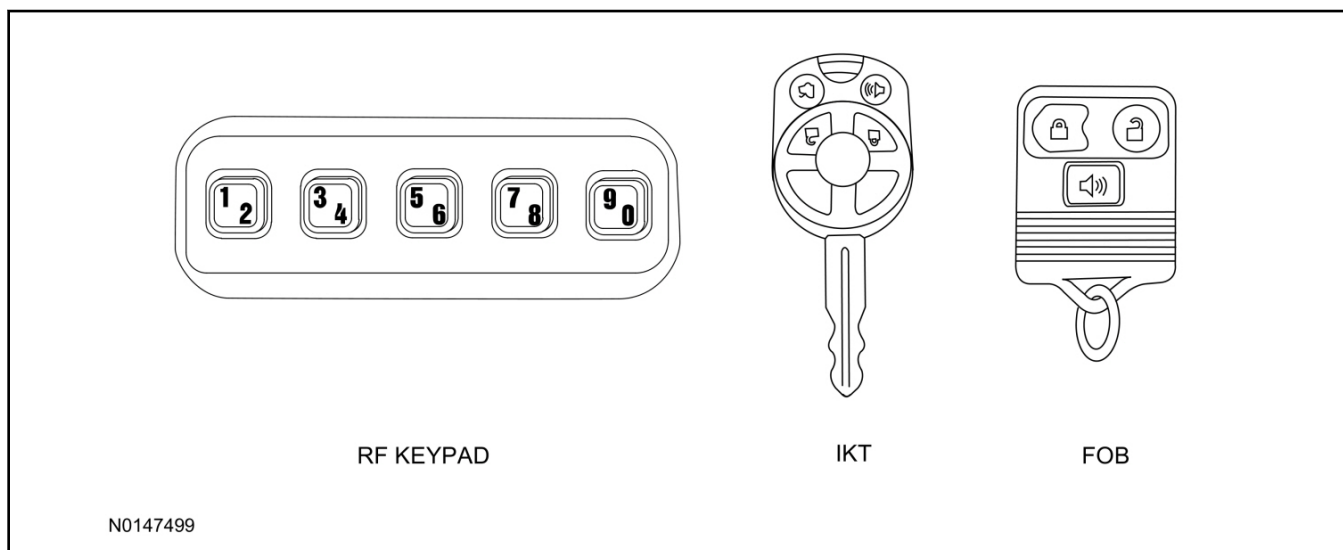
NOTE:

The vehicle will exit programming mode after 20 seconds of inactivity.

NOTE:

Ensure the brake pedal is not depressed during this procedure; the electronic signal could interfere with programming.

1. Make sure that you have all of the IKTs, fobs and RF keypads for this vehicle.



2. Make sure that you have all of the IKTs, fobs and RF keypads for this vehicle.

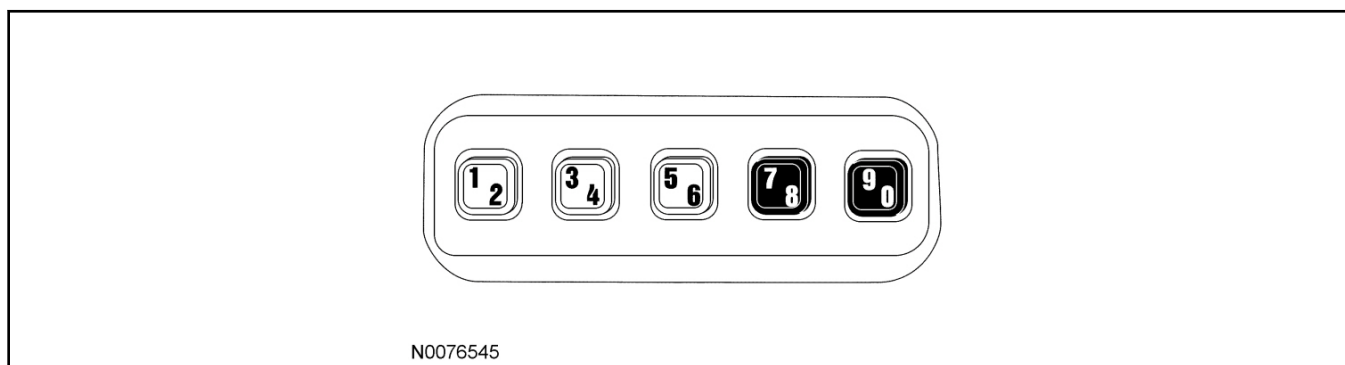
DESCRIPTION AND OPERATION (Continued)

3. Unlock the vehicle with programmed keyfob.
4. Insert a key in the ignition.
5. Turn the key from the OFF position to the RUN (not START) position eight times within six seconds.
The eighth turn must end in the OFF position.
The system will chime to confirm the vehicle is in programming mode.

NOTE:

Some vehicles may require four key cycles before returning to the OFF position.

6. Within 10 seconds of completing the previous step, press any button on remote entry transmitter, if equipped.
The system will chime once, to confirm that the Fob has been programmed.
7. Within 10 seconds of completing the previous step, press any button on remote entry transmitter, if equipped.
The system will chime once, to confirm that the Fob has been programmed.
8. Within 10 seconds of completing the previous step, press the 7/8 and 9/0 buttons simultaneously on the RF keypad 1.
The system will chime once, to confirm that the RF keypad has been programmed.
Repeat this step if more than one RF keypad is used.



9. After all remote entry transmitters have been programmed; turn the ignition to the RUN position for the vehicle to exit programming mode.
10. Test all remote entry transmitters for proper operation, perform a lock/unlock cycle on all remote entry transmitters.

NOTE:

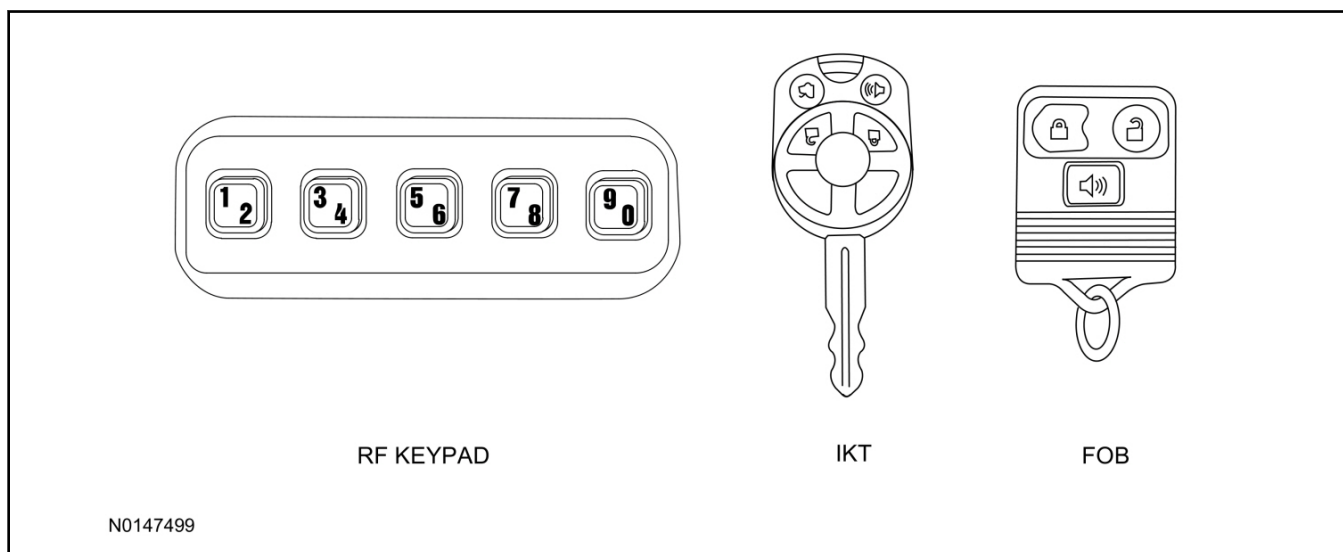
Most vehicles have an audible feedback when programming such as horn honks, door locks/unlocks, or chimes.

Some vehicles may not have audible feedback e.g C-MAX

11. If the remote entry transmitters do not program properly repeat the "Type A - Programming and Installation" procedure. The driver's door may need to be opened and closed to reset the system.

Type B - Programming and Installation

1. Make sure that you have all of the fobs and RF keypads for this vehicle.

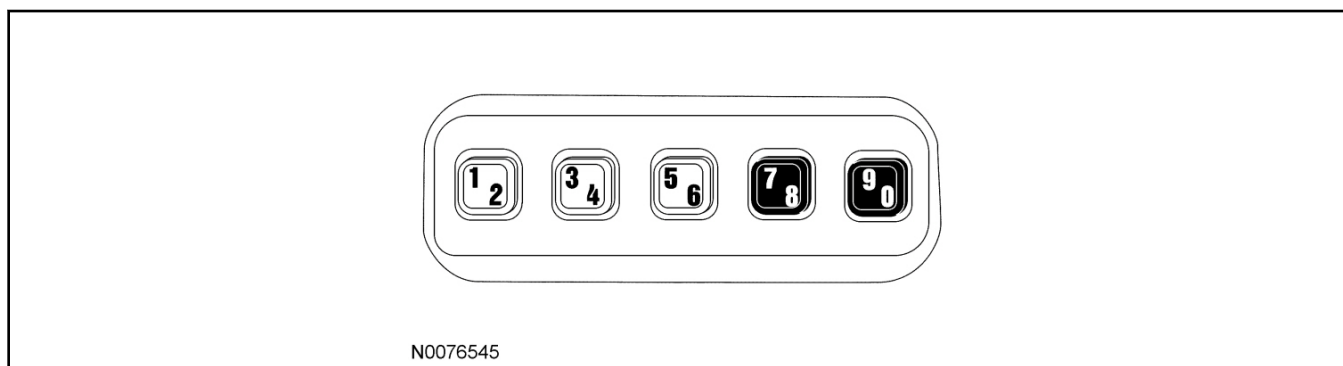
DESCRIPTION AND OPERATION (Continued)

2. Unlock the vehicle with programmed keyfob.
3. Put a key in the ignition.
4. Turn the key from the OFF position to RUN (not START) position eight times within 10 seconds with the eighth turn ending in the RUN position. The doors will lock, and then unlock, to confirm the vehicle is in programming mode.

5. **NOTE:**
On some IKT keys, the door locks will not activate.

Within 20 seconds of completing the previous step, press any button on fob 1, if equipped. The doors will lock, and then unlock, to confirm that the fob has been programmed.

6. Within 20 seconds of completing the previous step, press any button on fob 2, if equipped. The doors will lock, and then unlock, to confirm that the fob has been programmed.
7. Within 20 seconds of completing the previous step, press the 7/8 and 9/0 buttons simultaneously on the RF keypad 1.
The doors will lock, and then unlock, to confirm that the RF keypad has been programmed.
Repeat this step if more than one RF keypad is used.



8. After all remote entry transmitters have been programmed, turn the ignition to the OFF position.
The doors will lock, and then unlock, to confirm that the vehicle has exited programming mode.

DESCRIPTION AND OPERATION (Continued)

9. Test all remote entry transmitters for proper operation, perform a lock/unlock cycle on all remote entry transmitters.
10. If the remote entry transmitters do not program properly repeat the "Type B- Programming and Installation" procedure. The Driver's door may need to be opened and closed to reset the system.

Type C - Programming and Installation

1. Refer to the Configuration Chart of this document to ensure the correct Communication Type is used on the keyless entry keypad. Instructions for programming to the correct communication type may be found under Configure Device.

1 Configure Device**NOTE:**

Reference the table on page 2 for communication type that applies for the vehicle.

NOTE:

The keyless entry keypad can be used in various vehicle applications. The following procedure describes the method to switch between the two communication types.

NOTE:

Only one button press is recognized. After the button press is registered, the flash rate will change to reflect the new setting of the protocol. If you first press the 1/2 button, you cannot then press the 9/0 button to change the selection. You must exit the session.

Upon pressing the 1/2, 3/4, and 9/0 buttons simultaneously for at least one second, all five buttons will flash at a two flash per second rate. This indicates the keypad is waiting for master code entry. The master code is entered as in a normal keypad unlock, each button press will give another five second window for the next button press. If no button is pressed within five seconds the configure mode will exit.

2. When the proper master code is entered the 9/0 button will flash a pattern that corresponds to the current protocol set:
 - One flash per second for "Communication Type 2".
 - Three flashes per second for "Communication Type 1" (Default).
 3. You will have 10 seconds to:
 - Press the 9/0 button to change the protocol to "Communication Type 2".
 - Press the 1/2 button to change the protocol to "Communication Type 1" (Default).
 4. Press the 5/6 button to confirm the entry, the 1/2, 3/4, 5/6 and 7/8 buttons will flash four times to confirm protocol change and the keypad will turn off and sleep. If the 5/6 button is not pressed within 10 seconds of protocol change, the protocol will NOT change and the procedure will need to be repeated.
2. Verify that the Integrated Diagnostic System (IDS) is updated to the most current version.

NOTE:

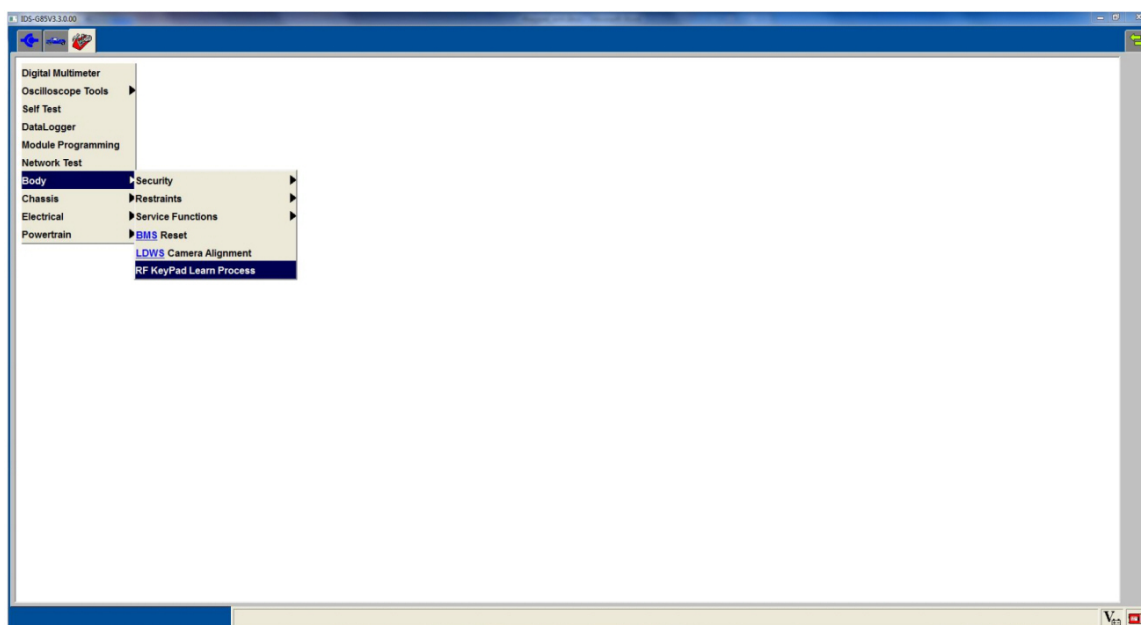
EcoSport uses the Ford Diagnosis and Repair System (FDRS). Use FDRS instructions in each step to program to an EcoSport vehicle.

DESCRIPTION AND OPERATION (Continued)

3. Connect IDS or FDRS:
 - For IDS, Follow the prompts to select new vehicle session and then enter the VIN.
 - For FDRS, log in and then select the "Read VIN from vehicle" button. When the VIN is read, select the "Go" button.
4. Program the keyless entry keypad to the vehicle using the IDS.
 - Select the Tool Box icon.
 - Select Body.
 - Select RF Keypad Learn Process.

NOTE:

IDS:



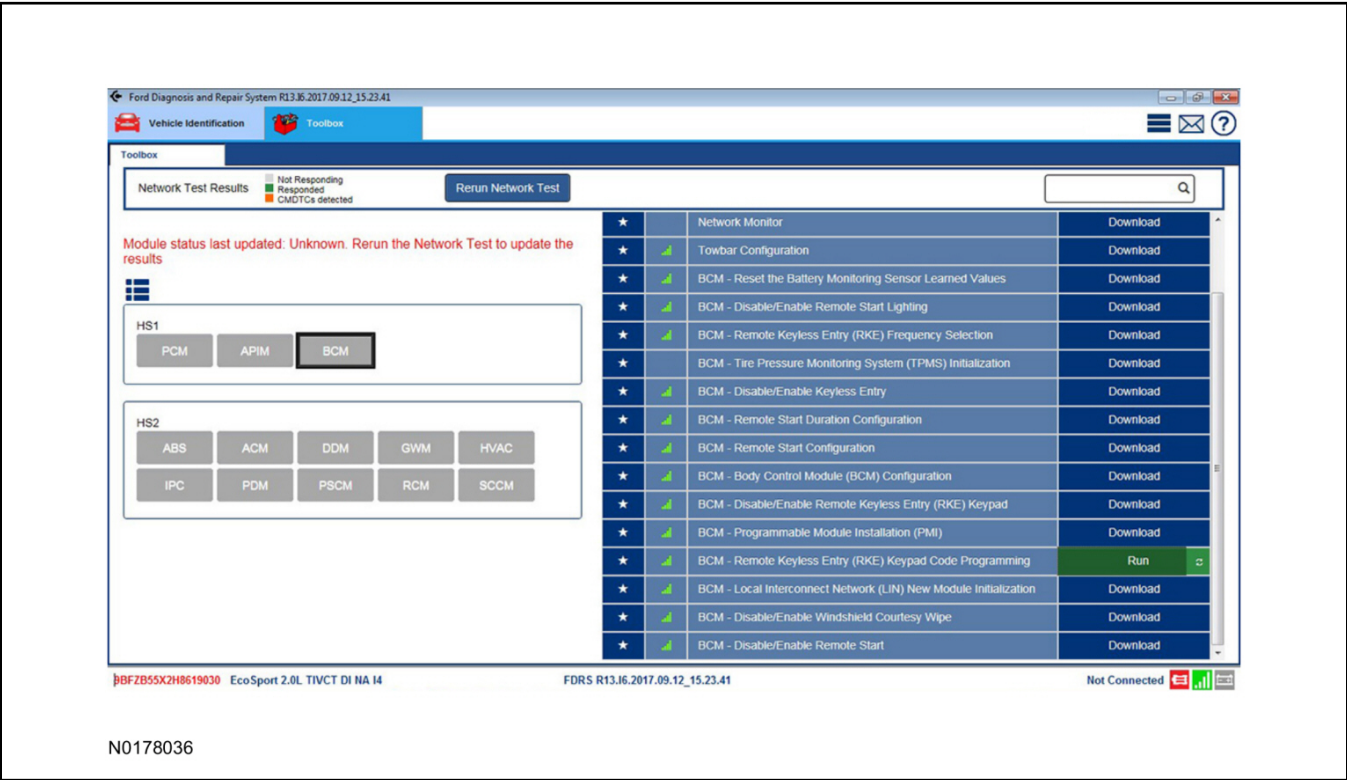
N0152099

5. Program the keyless entry keypad to the vehicle using the FDRS.
 - Select the Tool Box tab.
 - Select BCM.
 - Select "Download" and then "Run" for BCM - Remote Keyless Entry (RKE) Keypad Code Programming.
 - When asked to "Select desired function", select "Enter Key Code" and press the Select button.

DESCRIPTION AND OPERATION (Continued)

NOTE:

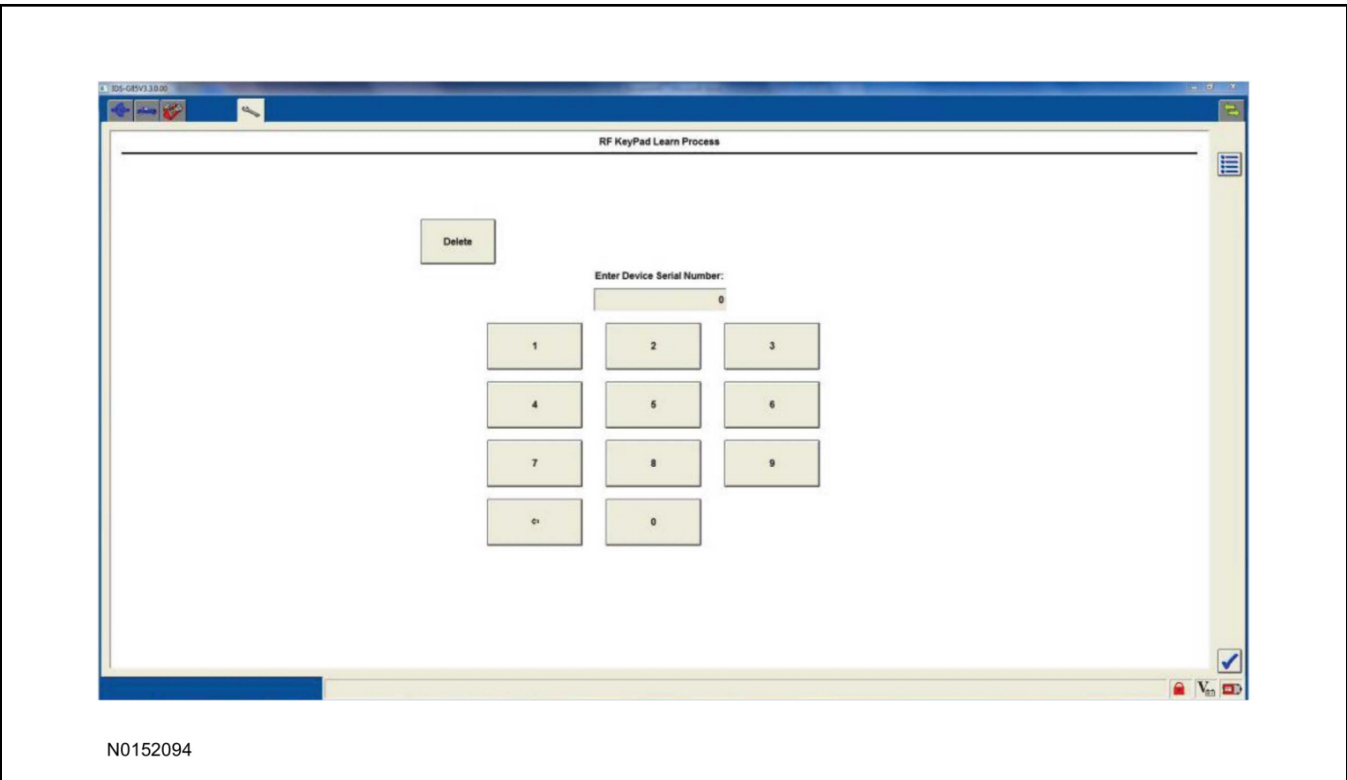
FDRS:



6. Follow the On-screen instructions until the screen below is displayed:

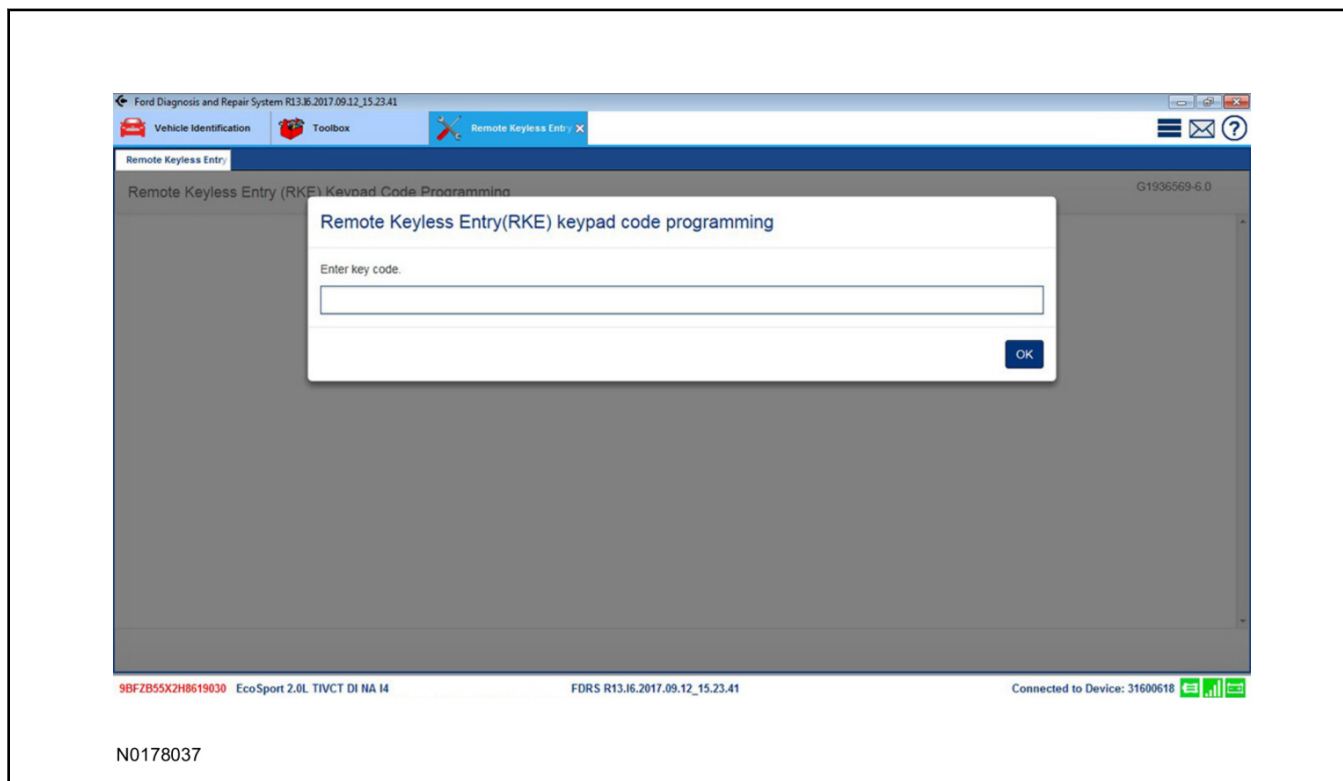
NOTE:

IDS:



DESCRIPTION AND OPERATION (Continued)**NOTE:**

FDRS:



7. For IDS, enter the device's serial number and select the tick button.
 - The serial number is up to six digits.
 - The serial number is located on the part package.
 - If IDS responds with "Serial Number is not Valid", go to the **"Alternate Programming Method"** section.
 - If all four storage locations are in use, go to the **"Free Storage Location"** section.
8. For FDRS, enter the 48 character string located on the part package (no spaces).

Synchronize Keyless Entry Keypad to Vehicle (Type C - Continued)

1. Once the unique data is entered, the programming routine will ask to select the tick (IDS) or OK (FDRS) button and activate the Lock command on the keypad. This step will ensure that the keypad and the vehicle are synchronized.
 - A progress bar will be displayed and will complete over 10 seconds while the vehicle is commanded to synchronize with the keypad.
 - During the display of the 10 second progress bar, activate the Lock command by pressing and then releasing the 7/8 and 9/0 buttons on the keypad simultaneously.

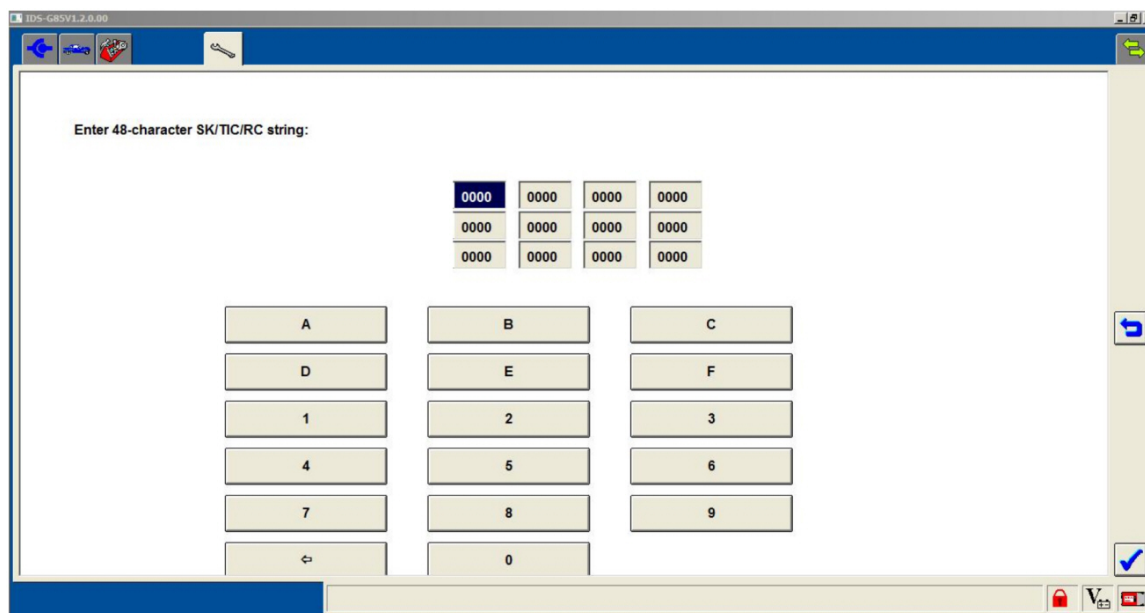
DESCRIPTION AND OPERATION (Continued)**Test Keyless Entry Keypad Operation (Type C - Continued)****NOTE:**

The Keyless Entry Keypad will not work while the FDRS programming procedure is in process. Continue to the FDRS prompt that states "Application Finished. Please press OK to continue" and select "OK" before attempting to test the Keyless Entry Keypad operation.

1. When the synchronization is complete, the programming routine will instruct the installer to turn off the vehicle ignition key and test operation of the keypad. At this time, perform the following steps:
 - 1 Close all vehicle doors.
 - 2 Press the 7/8 and 9/0 buttons on the keypad to lock all doors.
 - 3 Enter the keypad's Master Code to unlock the driver's door.
 - 4 Within 5 seconds of Master Code entry, press the 3/4 button to unlock all doors.
 - 5 Within 5 seconds of pressing the 3/4 button, press the 5/6 button multiple times to release the trunk.

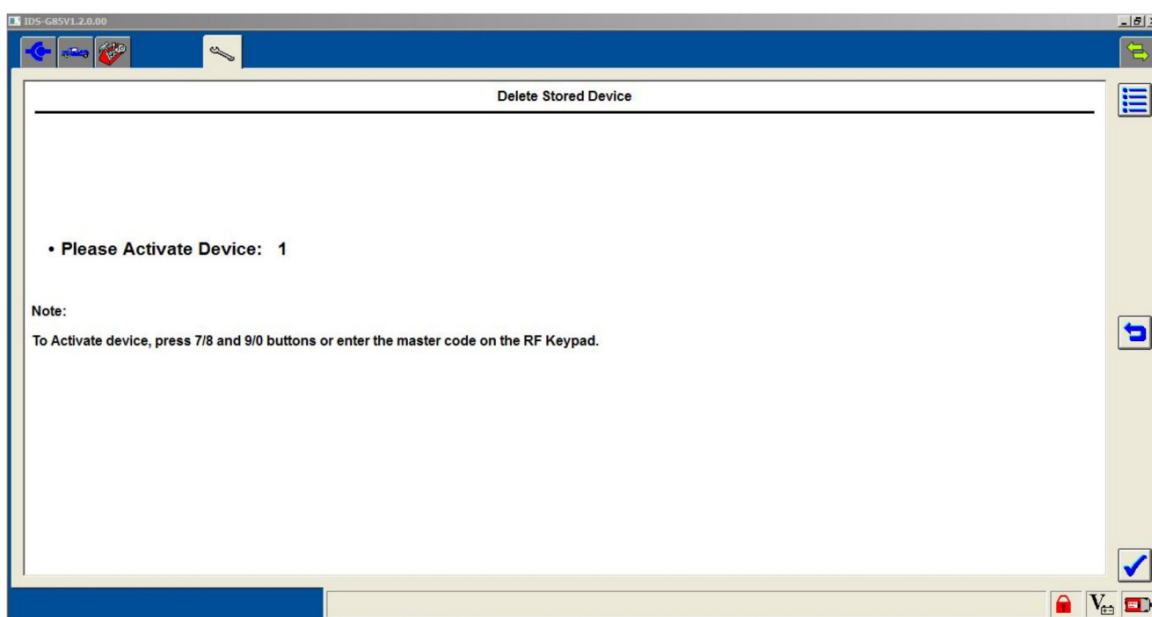
IDS Alternate Programming Method (Type C - Continued)

1. If IDS responds with "Serial Number is not Valid", answer YES to the question "Would you like to enter 48-character SK/TIC/RC string?"
 - The 48-character string is located on the part package.
 - Using either the computer keyboard or the on-screen buttons, enter the 48 characters, 4 digits at a time.
 - Select the tick button when all 48 characters have been entered.



DESCRIPTION AND OPERATION (Continued)**Free Storage Location (Type C - Continued)**

1. If all four storage locations are in use, IDS/FDRS will ask if you would like to determine which keypad units are programmed to which storage locations. The process will begin by asking you to activate device #1:
 - Press the 7/8 and 9/0 buttons on the first keypad that is already programmed to the vehicle. Then, select the tick (IDS) or OK (FDRS) button.
 - IDS/FDRS will ask if you would like to check another device. If there is another keypad on the vehicle, select YES on IDS/FDRS to check that keypad unit. Proceed with the activation process to see if it is programmed to the vehicle.
 - Repeat this process for all keypads attached to the vehicle. Up to four keypads can be programmed to the vehicle.

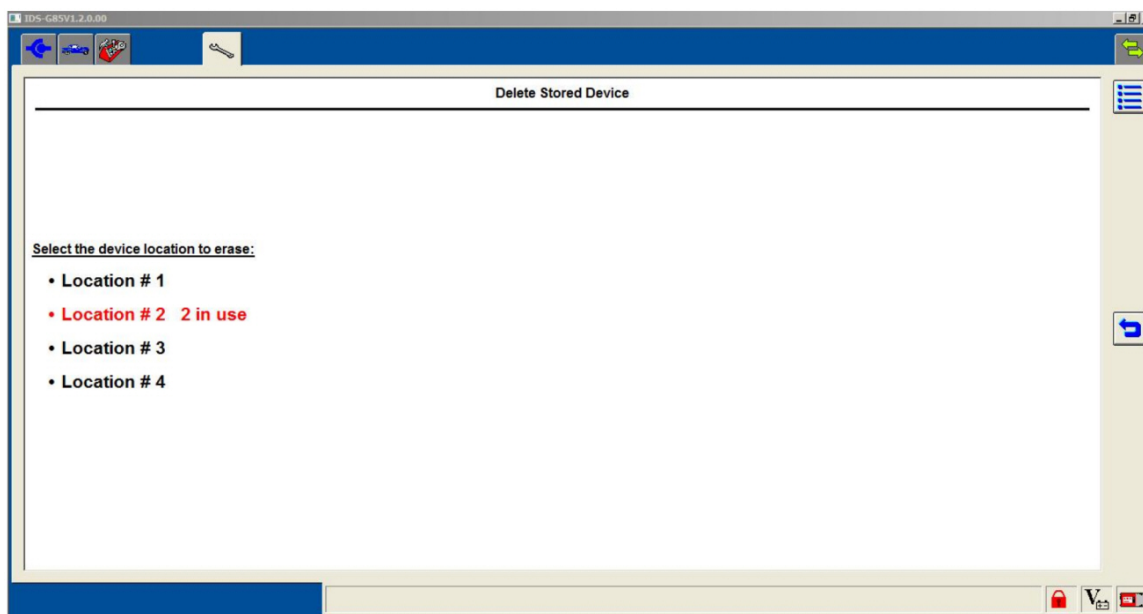


N0152096

2. When all keypads have been tested, select NO when asked by IDS/FDRS whether you would like to test another device. A screen similar to the one below will be displayed:
 - 1 Location # 1 – 4 refers to the four storage locations on the vehicle that may be programmed with information for a keypad.
 - 2 “2 in use” refers to the second keypad device that was activated during the device check.
 - 3 “2 in use” is listed next to the storage location where it is programmed.
 - If you want to delete keypad #2 from the vehicle, select Location #2 and select the tick button.
 - If you want to keep keypad #2 programmed to the vehicle and delete all other locations, select Location #1, Location #3, and Location #4. Then select the tick button.

DESCRIPTION AND OPERATION (Continued)**NOTE:**

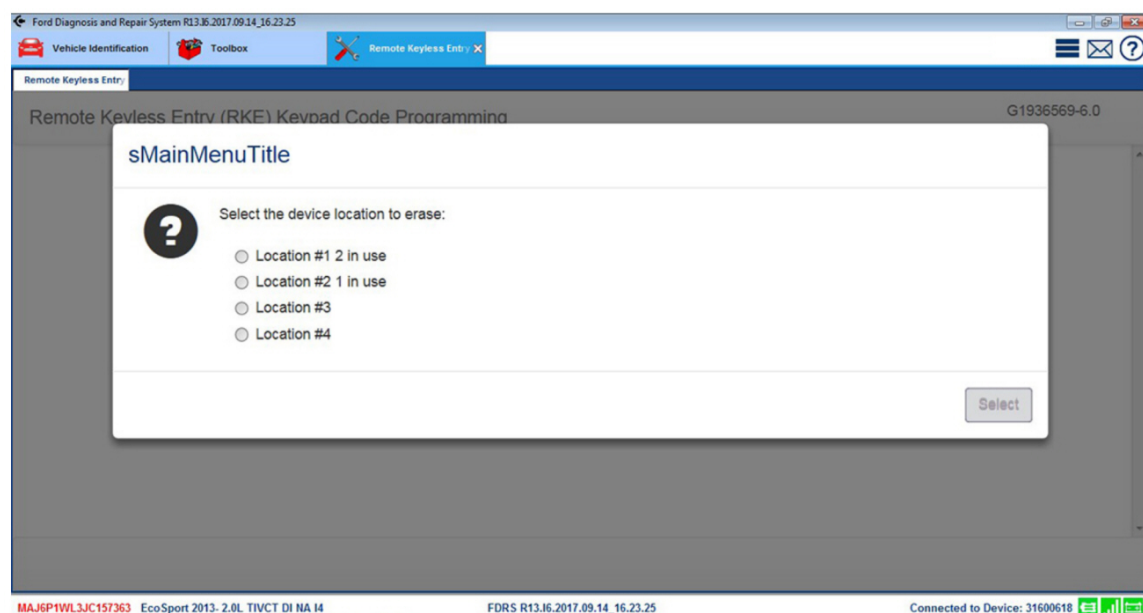
IDS:



N0152097

NOTE:

FDRS:



N0178038

DESCRIPTION AND OPERATION (Continued)**Troubleshooting (Type C - Continued)**

1. If the programming procedure has been completed, and the vehicle does not respond to commands from the keyless entry keypad, try these suggestions:
 - Ensure that the vehicle is NOT a push-button start vehicle.
 - Ensure that the device is configured properly by following the steps in the "**Configure Device**" section.
 - Ensure that the device is synchronized to the vehicle:
 - Enter the programming process ("**Program Device to Vehicle**" section).
 - Instead of entering the device's serial number, select the Delete button to determine whether the vehicle recognizes the keypad.
 - If the device is recognized by the vehicle (listed as In Use when activated), delete the storage location contents.
 - Re-enter the programming process and complete all steps through the synchronization process and the operational test.

Programming a Personal Entry Code (if desired) - All Vehicles**NOTE:**

If you lose your code card, please contact your Ford or Lincoln dealership for factory code retrieval.

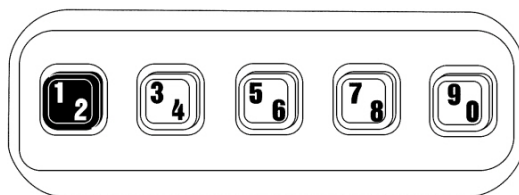
NOTE:

Do not set a personal code that uses five of the same number. Do not set a personal code that uses five numbers in sequential order. There is a maximum of two access codes; the factory set code and one personal code. If you reprogram the personal code the prior personal code will be erased.

NOTE:

Do not repeat the "**Programming and Installation**" section if a mistake is made in the "**Programming a Personal Entry Code**" section.

1. Enter the factory set code, as indicated on your code card.
2. Within five seconds of entering the factory code, press and hold the 1/2 button for 1 second, the 9/0 button will flash twice to confirm the keypad is in programming mode.



N0076542

3. Within five seconds, enter your desired personal 5-digit code. Each digit must be entered within five seconds of the previous digit.

DESCRIPTION AND OPERATION (Continued)

- The vehicle doors will unlock-lock-unlock to confirm that your personal code has been programmed to the keypad and the 9/0 button will flash twice to confirm that the keypad has exited programming mode.

Adhering the Keypad to the Vehicle - All Vehicles**NOTICE:**

Do not adhere to moveable glass or windshield.

NOTE:

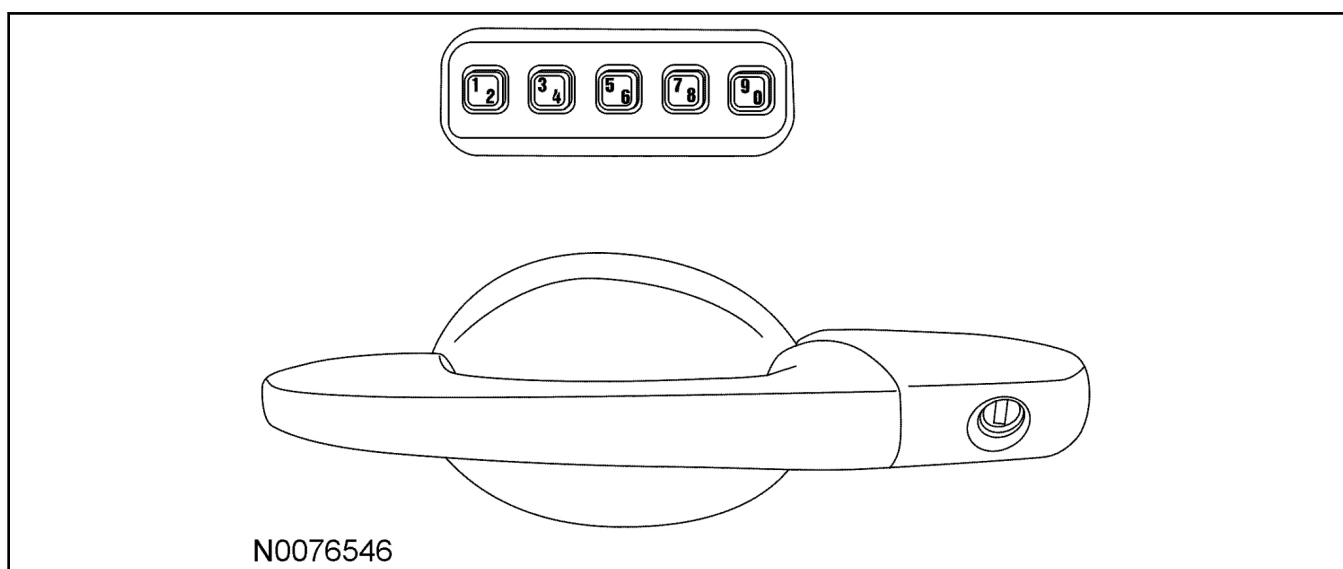
For proper adhesion, the mounting surface should be at least 60°F (15°C).

NOTE:

The tape is very sticky and will adhere quickly once contact is made.

NOTE:

This product is designed to attach to your car door, centered between the door handle and the window sill, but will work mounted to a relatively flat surface.



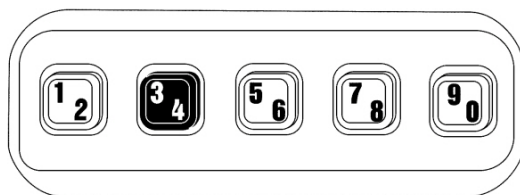
- Hold keypad up to desired mounting surface to confirm that all the tape will contact the mounting surface.
- Clean the vehicle surface where the keypad is to be adhered with the alcohol wipe provided.
- Pull the tape tabs off the keypad tape, orient the keypad in the desired location and press onto the door surface.
 - Be sure to press firmly on all edges to ensure proper adhesion of the tape.

Using the Keypad - All Vehicles**NOTE:**

Refer to the "Locks and Security" section of your vehicle Owner's Guide for operation of remote transmitters during RUN/START. Remote transmitter operation in RUN/START key position is model dependent.

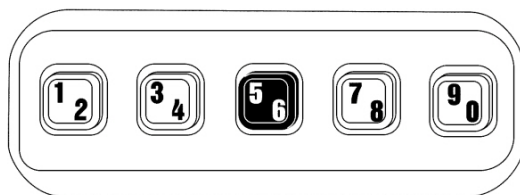
DESCRIPTION AND OPERATION (Continued)

1. To unlock the drivers door, enter your personal 5-digit code or the factory set code.
 - Each digit must be pressed within five seconds of each other.
2. To unlock all doors, press 3/4 button within five seconds of entering a valid keypad code.



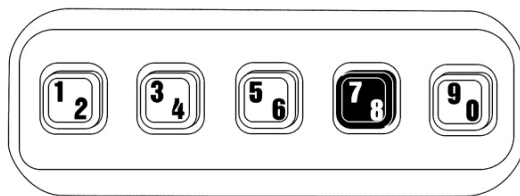
N0076543

3. To unlock the trunk or hatch, if equipped, press the 5/6 button within five seconds of entering a valid keypad code (IKT vehicles may require the 5/6 button to be pressed twice). Press the 5/6 button twice to open or close the passenger side power sliding door, if equipped.



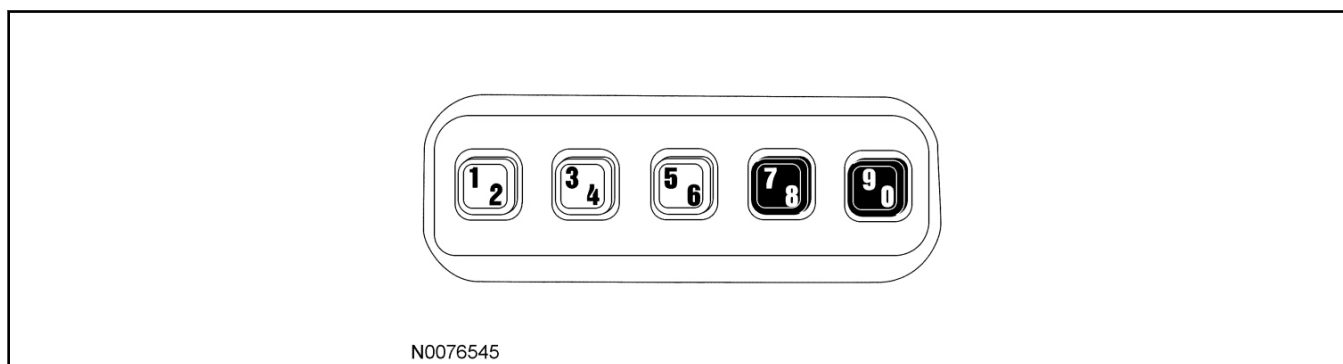
N0076544

4. To unlock and open the driver side power sliding door, if equipped, press the 7/8 button twice within five seconds of entering a valid code.



N0076554

5. To lock all doors, press the 7/8 and the 9/0 keys simultaneously.
 - You do not have to enter a 5-digit code.

DESCRIPTION AND OPERATION (Continued)**Low Power Warning - All Vehicles**

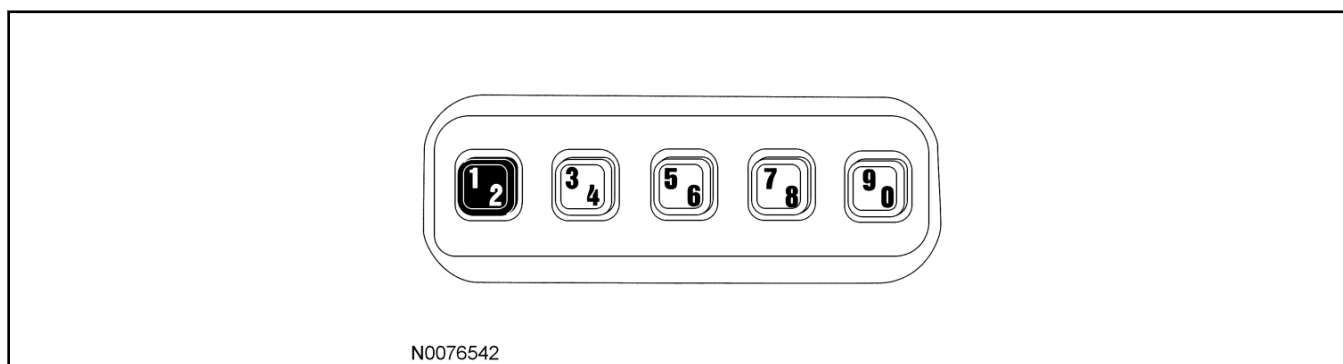
1. If you unlock the door with the keypad and the locks cycle one additional time, it is time to replace the unit.
 - The battery is not replaceable.

Anti-Scan Mode - All Vehicles

1. If the wrong code has been entered 7 times (35 consecutive button presses) the keypad is disabled for one minute and the keypad lights will flash during this time.

To Remove a Personal Code, If Desired - All Vehicles

1. Enter the factory code, then within five seconds press and hold the 1/2 button, for 5 seconds. The vehicle will unlock, lock and then unlock to confirm that your personal code has been removed. The 9/0 key will flash four times (2 quick then 2 slow) to confirm that your personal code has been removed.



2. Release the 1/2 button.

Owners Instructions - All Vehicles

1. Place the user manual with the vehicle's owners manual when programming and installation is complete.
2. This device complies with part 15 of the FCC rules and with RSS-210 of Industry Canada. Operation is subject to the following two conditions:
 - 1 This device may not cause harmful interference.
 - 2 This device must accept any interference received, including interference that may cause undesired operation.

DESCRIPTION AND OPERATION (Continued)

- Changes or modifications not expressly approved by the party responsible for compliance could void the user's authority to operate this equipment.