

# Ford Original Equipment Remote Start System Bronze RMST Gen2 - 1 Button User Guide




**Operation:** \*\* Parking lights will flash signaling that a button has been pressed\*\*

**Lock:**  (Located on Key)


Press once - Lock doors

Press twice - Confirm Vehicle Locked

**Unlock:**  (Located on Key)

Press once - Unlock doors (Drivers door)

Press twice - Unlock Remaining doors

**Panic (red button):**  (Located on Key)

Press once - Car Find feature (each time pressed sound will increase)

Press & hold 3 sec. - Panic Alarm will sound (hold again to shut off)

**Remote Start:** 

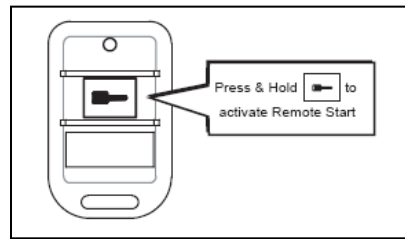
Press & hold 3 sec. - Remote start will activate (repeat to deactivate)


Press once - When vehicle is Remote Started to activate & deactivate Rear defrost (optional)

**Override Button:** Button is not located on the Transmitter (location left kick panel near hood release/parking brake or next to Data Plug)

Press & hold - Used to enter RMST programming option menu  
w/ Ignition on & drivers door open (**please do not use  
contact dealer**)

## **RMST Procedures :**




- Press & hold RMST button  (3 sec.) horn will sound 1 time to initialize starting process
- Ignition will turn on and RMST will crank vehicle Starter until vehicle turns over and horn will sound again to confirm vehicle has started
- The vehicle will run for 15 min. then shut down
- When entering the vehicle before run time has ended press unlock , insert key into ignition and turn to the run position depress the brake this procedure is called key takeover you are now ready to drive your vehicle (Depressing the Brake Pedal before the key is inserted into the ignition will turn vehicle off)
- **Warning :** Do not have hood open or keys in the ignition while using the RMST

## **Troubleshooting:**

### **Failed Attempt to Remote Start**


When attempting a remote start of your vehicle, the system has several safety checks that it performs. If any of these inputs are present that should not be, the system will respond back to you with several horn alerts “honks” to help you identify which input is present. These “honks” will occur after initiating a start sequence with the transmitter, the system will turn on the ignition, but then respond back with several horn “honks” and abort the starting process. When this occurs, count the number of “honks” and refer to the information below to correct the situation preventing a remote start. If the vehicle attempts to start but stalls, depending on how the system was configured, it may re-attempt to start after pausing 5 seconds, then re-attempting up to four times. If the vehicle does not start after the fourth attempt, the system will abort the start process.

- 2 “honks”     Brake is being depressed or the hood is open**
- 3 “honks”     One of the vehicles doors is open**
- 4 “honks”     Tachometer is not programmed – contact dealer**
- 5 “honks”     The key is in the ignition**
- 6 “honks”     The remote Start System is in Service/Valet mode**

1. **2 “honks”** – If experiencing trouble starting vehicle with the remote, verify the key is not in the ignition, hood is closed, and factory theft /red indicator light on your dash board is not blinking rapidly. If the theft indicator is blinking rapidly turn your key to run and allow the vehicle to rest for a period of 5 min. or until the indicator light turns out.
2. **3 “honks”** – Check and close all open doors on vehicle.
3. **4 “honks”**- Contact you Dealer for reprogramming
4. **5 “honks”** – Remove the key from the ignition, and initiate remote start procedure again.
5. **6 “honks”** - Valet mode - The led light on the dashboard will flash twice at all times. To return the system to its normal operating mode, turn the ignition key to the ON (run) position, press and hold the brake pedal in and press the  button on the key fob three times. The horn will “honk” 6 times, indicating that the system is now in its normal operating mode.

### **Adding or Reprogramming Remote Controls to Your System**

The system has the ability to operate from up to eight (8) remote controls. Follow these instructions to add a remote control to your system.

1. Turn vehicle ignition on.
2. Press and hold the brake pedal.
3. Press and hold the programming/override button under the instrument panel.
  - a. After 15 seconds, the horn will sound three (3) times. This indicates that the unit has entered the remote control programming mode. The brake pedal can be released at this time.
4. Release the programming / override button.
5. Press the  button on the remote control you want to program
  - a. The horn will sound once (1), indicating that the system has “learned” that remote control
6. Repeat step five (5) for any additional remote controls you want programmed
7. Turn the vehicle ignition off to exit the programming mode. Test all remote controls to ensure that they are working properly.